

OLPA1 Parking / Area Light

The OLPA1 series offers stunning lighting fixtures with versatile mounting options to elevate any space. Its elegant curves and seamless mounting assembly create a sophisticated look that blends with any decor. With a variety of mounting styles, OLPA1 series is the perfect choice to create a beautiful and functional environment.

Parking garages demand versatile solutions and range of distributions tailored to specific needs. The OLPA1 provides three distributions which are ideal for typical parking garage and canopy applications.

Additionally, the OLPA1 has various mounting options that will bring uniformity in light and style to any project. Use the OLPA1 with the pole top or arm mount as the top deck or walkway lighting solution.



FEATURES

- Smooth, low profile design can be used in 8-20' height applications
- One latch, tool free for easy installation
- Die-cast low-copper-alloy aluminum
- Patented microstructure low-glare lens with three distribution patterns
- Color Temperature: 3000K, 4000K, & 5000K
- CRI = 80 Standard
- Lumen output from 5,000-19,500
- Uplight Optional (Approximately 800 lumens)
- Full Cutoff
- Versatile mounting options
- Operating Temperature = -40°C (-40°F) to 40°C (104°F)
- High-Performance LEDs
- Lumen Maintenance: L90 = >60,000 hours at up to 50°C ambient
- Long-life durable powder-coat finish available in 4 standard colors
- IP66 Rated (Wet-listed)

ELECTRICAL SPECIFICATIONS

- Power Input: 120-277V
- Power Factor: >0.95
- Efficacy: Up to 130 LPW
- Surge Suppression: 4kV Standard, Additional 10kV Optional
- Power Selectable
- THD <15%
- Control Options: 0-10V Dimming

TESTS & CERTIFICATIONS

- ETL (UL1598)
- CSA (C22.2 No. 250.0)
- ROHS Compliant
- Meets DLC 5.1 and DLC 5.1 Premium¹

1. Not all versions of this product may be DLC Premium qualified or DLC qualified. Please check the DLC Qualified Products List to confirm which versions are qualified.

WARRANTY

- 5-year Warranty (Parts or Replacement)
- Other Warranty options available. Please consult factory.





OLPA1 Parking / Area Light

ORDERING INFORMATION

EXAMPLE: OLPA1-080SP-UNVL-40-5W-SM-NA (Options)

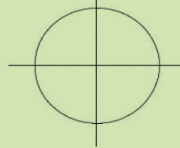
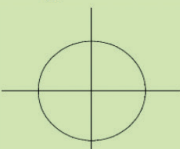
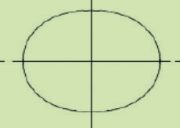
| SERIES | WATTAGE | VOLTAGE | COLOR TEMP | DISTRIBUTION | MOUNTING | FINISH |
|--|--|------------------------------------|--|---|--|---|
| OLPA1 = Optec LED Parking & Area Light | 080SP= 40-60-80W ¹ 150SP = 100-120-150W ² | UNVL = 120-277V UNVH = 347-480V | 30 = 3000K (80 CRI) 40 = 4000K (80 CRI) 50 = 5000K (80CRI) SCT=Selectable Color Temp ⁶ | 5W = Type 5 Wide 5C = Type 5 Concentrate 5R = Type 5 Wide | SM= Surface Mount PDXX = Pendant Mount ³ TR = Trunnion Mount WM = Wall Mount PT = Pole Top Twin Arm Mount PS = Pole Side Mount | WH = White BZ = Dark Bronze BL = Black NA = Natural Aluminum CF = Custom Finish |

| OPTIONS | CONTROLS/SENSORS (Factory Installed) | ACCESSORIES |
|--|--|---|
| U8 = Uplight (800 Lumens) ⁴ SPD10 = 10kV Surge Suppressor SPD20 = 20kV Surge Suppressor EM = Emergency Battery Backup PL3 = Power Leads (3' Length/18 AWG) PL6= Power Leads (6' Length/18AWG) PLXX = Power Leads (18 AWG, Unit of Measure in Feet) DMLXX = 0-10V Dimming Leads (18 AWG, Unit of Measure in Feet) | Controls: WCM = Wireless Fixture Controller, Mesh Network Sensors: OS= Ambient/Occupancy Sensor, DIP switch controllable ⁵ TW=Twist Lock Photocell RCB7 = Receptacle Base 7 Pin ZGBS = Zhaga Receptacle Base BT =Ambient/ Occupancy Sensor, Bluetooth ⁵ WMOS = Wireless Mesh Occupancy Sensor/controller, Bluetooth ⁵ | WG = Wire Guard BG = Bird Guard HS = House Side Shield PSKRD = Pendent Swivel Kit, Round |

Ordering Footnotes:

- 080SP=Selectable Power 40W, 60W, 80W
- 150SP=Selectable Power 100W, 120W, 150W
- PDXX = Pendant Length (Please indicate length of pendent in inches.) Pendent standard diameter is 1/2"
- U8 option adds an additional 8.0W. U8 is available for pendent mount only.
- Includes Low Bay Lens, 8-20' mounting height
- SCT=Selectable Color Temperatures 4000K, 5000K

| WATTAGE | 120v | 208v | 240v | 277v |
|---------|------|------|------|------|
| 40 | .27 | .15 | .13 | .12 |
| 60 | .35 | .20 | .18 | .15 |
| 80 | .48 | .27 | .24 | .21 |
| 100 | .56 | .32 | .28 | .25 |
| 120 | .64 | .37 | .32 | .28 |
| 150 | .75 | .43 | .38 | .32 |

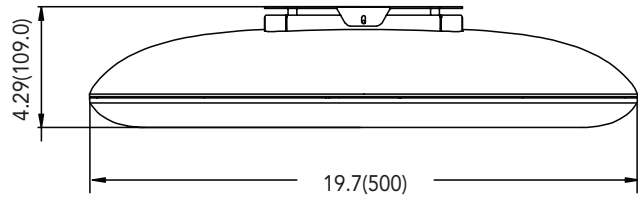
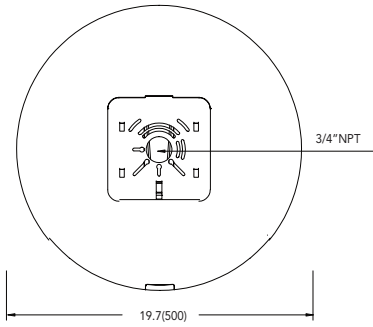
| Distribution | Model/Wattage | Lumens 80 CRI (See note below) | | | |
|---|---------------|--------------------------------|-------|-------|-------|
| | | 3000k | 3500k | 4000k | 5000k |
| Type 5 Wide  | OLPA1-040 | 4978 | 5231 | 5706 | 5728 |
| | OLPA1-060 | 7391 | 7759 | 7862 | 7867 |
| | OLPA1-080 | 9614 | 10121 | 10157 | 10153 |
| | OLPA1-100 | 12703 | 13107 | 13281 | 13103 |
| | OLPA1-120 | 14944 | 15444 | 15685 | 15507 |
| | OLPA1-150 | 18081 | 18615 | 19414 | 19043 |
| Type 5 Concentrated  | OLPA1-040 | 4720 | 4770 | 4840 | 4920 |
| | OLPA1-060 | 7080 | 7155 | 7260 | 7380 |
| | OLPA1-080 | 9440 | 9545 | 9680 | 9840 |
| | OLPA1-100 | 11800 | 11945 | 12100 | 12300 |
| | OLPA1-120 | 14160 | 14330 | 14520 | 14760 |
| | OLPA1-150 | 17700 | 17920 | 18150 | 18450 |
| Type 5 Rectangular Wide  | OLPA1-040 | 5292 | 5547 | 6069 | 6078 |
| | OLPA1-060 | 7849 | 8224 | 8378 | 8386 |
| | OLPA1-080 | 10171 | 10672 | 10822 | 10734 |
| | OLPA1-100 | 12752 | 13288 | 13079 | 13083 |
| | OLPA1-120 | 14978 | 15626 | 15580 | 15532 |
| | OLPA1-150 | 18088 | 18796 | 19430 | 19245 |

Note: All lumen values above are based off of 80 CRI. Lumen values are obtained from 3rd party testing to IESNA LM-79 Standards. Use the following lumen multiplier to compare to 70CRI: 30K=1.078, 35K=1.058, 40K=1.034, 50K=1.036



OLPA1 Parking / Area Light

WEIGHTS & DIMENSIONS



Weight
13.2 LBS/6KG



Bird Guard



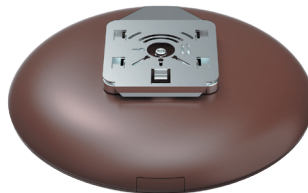
Pendent Mount/Uplight Module



Trunnion Mount



WireGuard



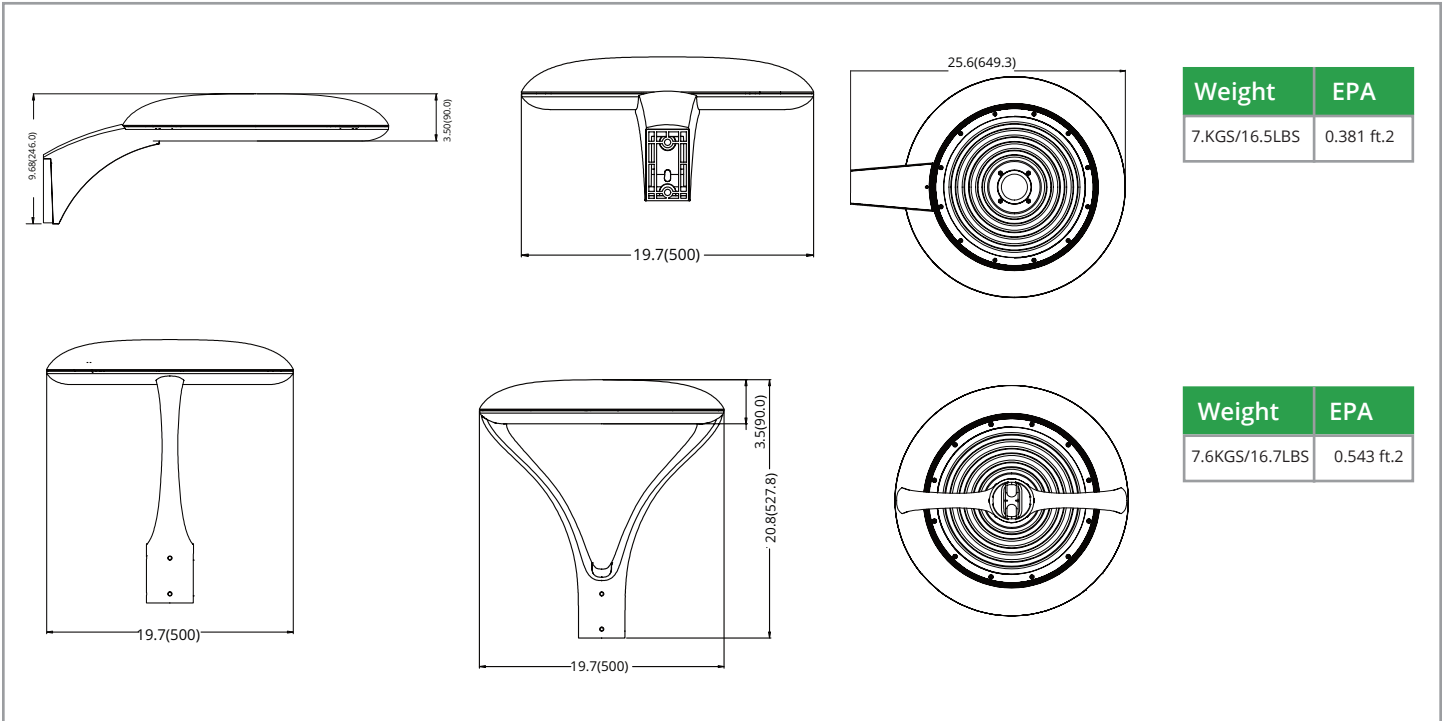
Surface Mount



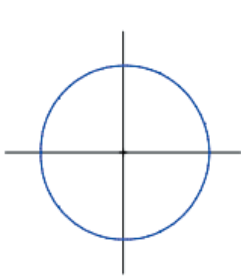
House Shield



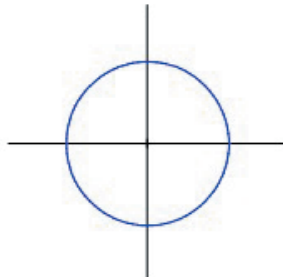
OLPA1 Parking / Area Light



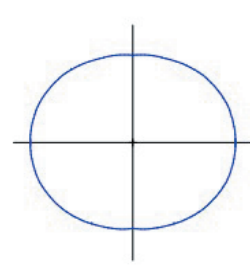
PHOTOMETRIC PERFORMANCE



Type 5 Wide



Type 5 Concentrated



Type 5R
(Type 5 Rectangular)